

---

## Street Level Health Project ~ Open House

As a current partner of Episcopal Charities, Street Level Health Project (SLHP) is pleased to invite you to our Holiday Open House on Nov. 30<sup>th</sup> from 5:30 to 7:30 PM at our clinic and community center in the Fruitvale District (2501 International Blvd., Oakland). SLHP's mission is to improve the health and wellbeing of underserved urban immigrant communities in the Bay Area.

At the open house, we will be showcasing our newly renovated center, introducing our staff, volunteers and community members, and sharing stories about our work. Please RSVP by November 23<sup>rd</sup> to Emma Shaw Crane at (707) 303-5108. We are also available to speak at services and groups about the work we do and the populations we serve. Please contact us at (510) 533-9954.

---

### Parish Events

There will be a Christmas Brunch and Carol Sing after church on Sunday, December 11. We need quiche donations from the congregation! Please contact the church office or Linda Dobson (*lmtdob@aol.com*) and offer a quiche for a fun event.

We are still looking for Circle of Eight sign-ups. Starting in January, groups of eight adults will meet four times in the following months for a potluck dinner in a family home. The host sets the date and provides the main course and assigns the others for a potluck meal. Families with children are invited to join in with other families. Events may be dinners, lunches, picnics—whatever works to get to know each other and have a fun time.

Sign ups at coffee hour or call the church office.

---

### Upcoming Programs at THE BISHOP'S RANCH Healdsburg, California

2011	December 9-16	Silent Days in Advent
	December 16-18	Benedictine Weekend Retreat
2012	January 7	Epiphany Day with Bishop Marc
	January 20-22	Encaustic Collage, Creative Exploration
	February 4	The Enneagram Workshop
	February 12-15	The Bishop's Ranch Quilt Retreat

---

---

## ❖ WELCOME TO ST. CLEMENT'S ❖

If you are visiting today please introduce yourself to us and complete one of the cards on the back of the pew. This may be placed in the offering plate, given to an usher, or handed to the clergy. If you have questions about the order of service, please ask your neighbor in the pew.

Copies of our parish newsletter, *The Clarion*, are available on a rack in the narthex. We hope you will join us for coffee next door in Palache Hall. Help yourself to a name tag on the kiosk in the parish hall.

**Sunday School Classes** are upstairs in the parish hall. Children begin in the Children's Chapel at 10:00 AM, then break out into their classrooms, and join the congregation in the church for the Eucharist. **Nursery Care** for young children is available upstairs in Palache Hall.

---

### SERVING TODAY

Altar Guild	Melissa Newell, Frances Morgan, Karen McMahon, Charlice Danielsen
Ushers	Cathy DeVos, Joel & Sacha Grippando
Acolytes	Michael Niemuth, Jeremy O'Neill, Eamon Sherris-Watt, Molly Niemuth
Lay Readers	Jane Brooks (8:00) Bob Davis, Cathy DeVos (10:00)
Eucharistic Ministers	Charlice Danielsen (8:00) Diana Chappell, Linda Kranichfeld (10:00)
Coffee Hosts	St. Clement's Adult Choir

---

### PRAYER LIST

**In Our Parish:** Frederique, Jody, Margaret, Nauvelene, Gail, Margaret, Jennifer, Laura, David, Helen, Catherine, Charlotte, Mary Lou

**Friends & Loved Ones:** Katie, Barbara, Ned, Lee, Brad, Ginger, Nick, Norma, Johnny, Earl, Arlene, Rosemary, Barbi, John, Marilyn, Prajhan, Suzie, James, Ronald, Linda, Johnny, Bonnie, Jean, Candace, Steve, Benjamin, Sally, Nit, Veronique, Theresa, Carrie, Janet, Inge, Valerie, Christian, Brian, Joan, Liz, George, Helen, Rob, Roy, Kelli

**Departed:** Virginia Olson

### PRAYER REQUESTS

*You may submit prayer requests by filling out a form found at the church doors and placing them in the Prayer Request Box at the front door.*

---

---

## CALENDAR FOR THE WEEK

---

Sunday	November 20	8:00 AM	Holy Communion
		10:00 AM	Holy Eucharist
		10:00 AM	Sunday School
Monday	November 21	6:30 PM	Education for Ministry
Wednesday	November 23		<b>No Holy Communion</b>
Thursday	November 24	10:00 AM	<b>Thanksgiving Eucharist &amp; In-Gathering of Gifts</b>
Sunday	November 27	8:00 AM	Holy Communion
		10:00 AM	Morning Prayer
		11:30 AM	Senior Choir Rehearsal
		6:30 PM	Really Terrible String Orchestra



The flowers this morning are given by Virginia Jardim, in memory of her mother, Cutler Charlton.

---

### ADULT INQUIRERS

If you are interested in Baptism, Confirmation, or renewing your baptismal vows, please contact the rector. A class is “in the works”.

---

There will be **NO COMMUNION SERVICE** this coming Wednesday, November 23.

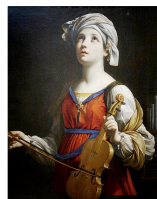
---

A memorial service for **VIRGINIA OLSON** will take place at 2:00 PM on Sunday, December 18.

---

### St. Cecilia's Day

Today, at the 10:00 AM service, the choirs celebrate the patron saint of music, St. Cecilia, whose feast day falls on November 22. We are especially happy to have the Corvo String Quartet perform with us. The Adult Choir will also put on a festive coffee hour after the service. Please join us!



---

**SENIOR CHOIR** does not meet after church today.  
**JUNIOR CHOIR** does not rehearse on Wednesday.

---

---

**MOVIE GROUP** will meet on Sunday, January 8, at 6:00 PM in the Cunningham home. Call 510-547-0890 for directions. Join us for a casual potluck and friendly discussions. The movies to be discussed are *In Time*, *Margin Call* and *Tower Heist*—all will be current showing.

---

### THANKSGIVING CELEBRATION

#### Holy Eucharist & In-Gathering of Gifts

Thanksgiving Day, 10:00 AM, Thursday, November 24

Sing your favorite Thanksgiving hymns, and remember those in need by bringing your gifts of food to the altar. Non-perishable foods will be donated to St. James' Food Pantry.

#### *St. James' Shopping List*

*To feed a family of four:*

- |                      |   |
|----------------------|---|
| 3 cans of vegetables | 2 cans of meat                              |
| 2 kinds of starch    | 3 boxes of dry milk                         |
| 2 cans of tomatoes   | 2 boxes of macaroni and cheese              |
| 3 cans of soup       | 2 pounds each of dry beans, rice, and pasta |
| 3 bags of ramen      | 1 box of cereal                             |
| 2 boxes of Jello     | 1 jar of peanut butter                      |
| 1 kind of dessert    |   |



---

**JAM SESSION II:** The sale of jam started last week after the 10:00 AM service and will continue until we are sold out. Look for tomato purée, strawberry-rhubarb jam, and lemon-apple marmalade. Benefits go to the Campaign for Better Nutrition. Thanks for your support!



**COFFEE HOSTS** are needed for 2012, especially for the month of January. Please sign up on the sheet in Palache Hall or call Mandy Hammond at 527-1373.

---

**THE REALLY TERRIBLE STRING ORCHESTRA** rehearses next Sunday, November 27, at 6:30 PM in the Music Room. Bring an instrument, stand and your sense of humor! For musically challenged and passionate adult string players. Suggested donation \$20. Under the wing of Corvo String Quartet with violinist Sara Usher and cellist David Morris, and sponsored by St. Clement's Church. For more information, contact [RTSO-SFBay@comcast.net](mailto:RTSO-SFBay@comcast.net).

---